



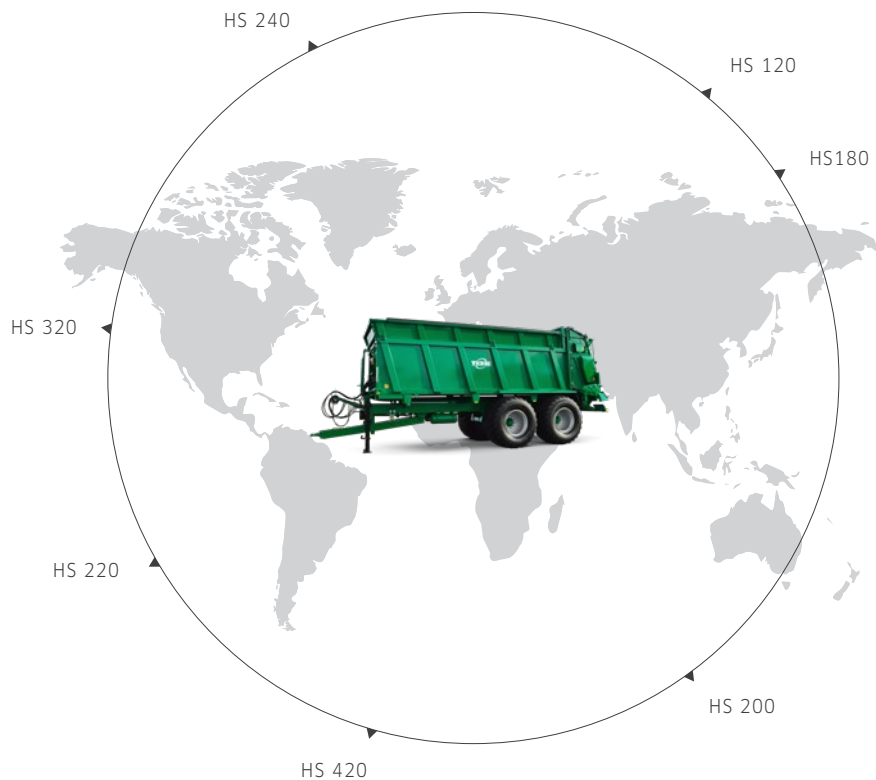
TEBBE

SPREADERS

HS 120, HS 180, HS 200, HS 220,
HS 240, HS 320, HS 420



SPREADERS BY TEBBE - FOR EXCELLENT PER- FORMANCE WITH RESPECT TO SIZE, QUANTITY AND THROUGHPUT



The HS series is the ultimate machine for agricultural contractors and very large agricultural companies. Everything in these machines is keyed toward size, quantity, performance and throughput. These machines have a very large spreader unit passage, finer chopping performance, a reinforced frame and a very strong axle suspension system.

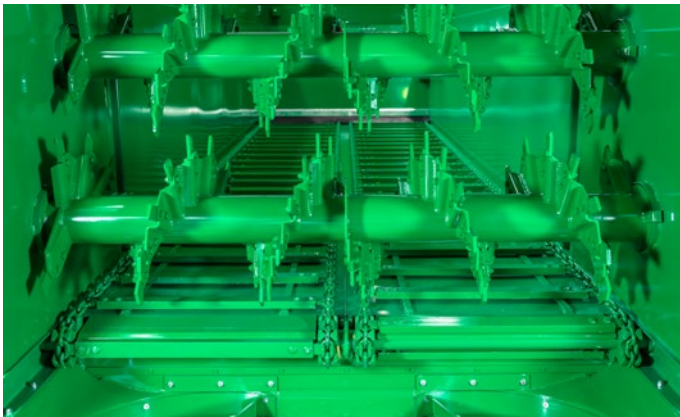
The HS spreaders by TEBBE allow uninterrupted spreading of 5,000m³ to 500,000 m³ of material annually per spreader. These extreme outputs can only be delivered by a very durable and high-performance design. HS spreaders are used on various continents, where they prove their quality and stability every day.



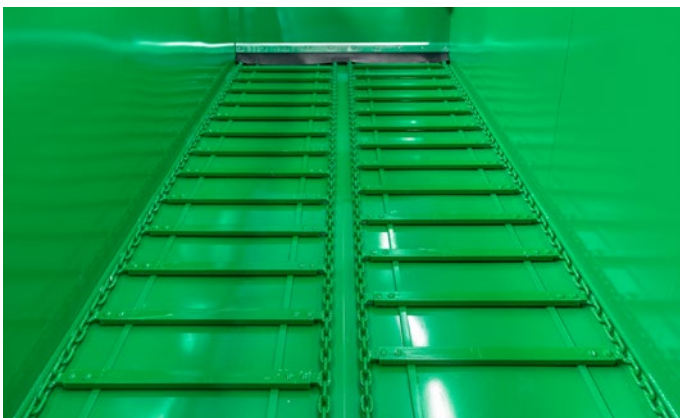
SINGLE-AXLE SPREADER

HS 120

The single-axle spreader HS 120 stands out thanks to a permissible overall weight of 12,000 kg and a high spreading output for efficient use of time. The heavy-duty model also makes it a superior endurance machine on large fields.



The beaters of the HS series are the strongest on the market. They are extremely durable and have a high service life. The screw-on tips are also reinforced with armouring.



As standard, all spreaders have a wear-resistant steel base with welded-on wear rails. The rolling floor strips are screwed to the 14 x 50 round steel chains.

HS 120/Technical Details

Total weight	12,000 kg
Working load approx.	7,000 kg
Support load	2,000 kg
Frame of bottom chain	6,000 mm x 2,000 mm
Box dimensions	4,700 mm x 1,910 mm
Height of side walls	1,100 mm
Load capacity approx.	12 cbm
Loading height over side walls	2,650 mm
Axles	10 bolts
Tires	560/60 R 22.5

Chassis

- > BPW single-axle aggregate
- > Clevis type coupling with 1 rubber shock absorber, ring Ø 40 mm
- > 10-t jack stand with 2-step gearbox
- > Warning lights for road transport

Brake

- > 2-wheel oil-pressure brake or 2-wheel air-pressure brake
- > Parking brake

Body

- > Welded 3 mm thick steel body
- > Height of side walls 1,100 mm
- > Rubber sealing on front wall
- > Hydraulically-actuated rear hood

Scraper Floor

- > Two conveyors with four round steel chains 14 x 50 mm (breaking load 4 x 24 t)
- > Steel bottom
- > Gearbox with hydr. motor forward and reverse motion of scraper floor

Spreading Aggregate

- > Two beater rotors with a diameter of 650 mm (opening area vertical 1,500 mm)
- > 1 ¼" roller chain to drive the beater
- > Two Ø 1,000 mm discs with four distribution vanes on each
- > Disc gearing with shaft Ø 60 mm/overload protection/freewheel drive mechanism, spreading unit protected by 8 mm thick HARDOX wear plates
- > WALTERSCHEID PTO PWE 480 with overload protection, freewheel drive mechanism and wide angle joint

Safety Devices

- > PTO-shaft with overload clutch for protection of mechanical drive and beater rotors
- > Overload clutch for protection of spreading system
- > Optional equipment for electrical operation:
 - Automatic stop of bottom chain. Monitoring of rotating beater rotors; the bottom chain is stopped when rotation is < 300 rpm.

Paintwork

- > Green RAL 6029



TANDEM-AXLE SPREADER

HS 180



The tandem-axle spreader HS 180 has a useful load capacity of 14,000 kg. In combination with a very high throughput, the spreader is designed for stable continuous operation in a variety of applications. In the DLG group test, it was the only spreader to be awarded the label 'very good' in the durability category.

HS 180/Technical Details

Total weight	22,000 kg
Working load approx.	14,000 kg
Support load	4,000 kg
Frame of bottom chain	6,700 mm x 2,000 mm
Box dimensions	5,400 mm x 1,910 mm
Height of side walls	1,400 mm
Load capacity approx.	16 cbm
Loading height over side walls	2,900 mm
Axles	10 bolts
Tires	560/60 R 22.5

Chassis

- > Chassis with two strong frame members
- > Tandem-axle aggregate with parabolic suspension, BPW axles
- > Hitch coupling with 2 rubber shock absorbers, swivel ring Ø 50 mm
- > 10-t jack stand with 2-step gearbox
- > Warning lights for road transport

Brake

- > 4-wheel oil-pressure brake or 4-wheel air-pressure brake
- > Parking brake
- > Automatic air-pressure brake

Body

- > Welded 3 mm thick steel body
- > Slurry gate with mechanical height indicator at front of spreader
- > Height of side walls 1,400 mm
- > Rubber sealing on front wall
- > Hydraulically-actuated rear hood

Scraper Floor

- > Two conveyors with four round steel chains 14 x 50 mm (breaking load 4 x 24 t)
- > Steel bottom
- > Gearbox with hydr. motor for forward and reverse motion of scraper floor

Spreading Aggregate

- > Two beater rotors with a diameter of 650 mm (opening area vertical 1,500 mm)
- > 1 ¼" roller chain to drive the beater rotors
- > Two Ø 1,000 mm discs with four distribution vanes on each
- > Disc gearing with shaft Ø 60 mm/overload protection/freewheel drive mechanism, spreading unit protected by 8 mm thick HARDOX wear plates
- > WALTERSCHEID PTO PWE 580 with overload protection, freewheel drive mechanism and wide angle joint

Safety Devices

- > PTO-shaft with overload clutch for protection of mechanical drive and beater rotors
- > Automatic air-pressure brake
- > Overload clutch for protection of spreading system
- > Optional equipment for electrical operation:
 - Automatic stop of bottom chain. Monitoring of rotating beater rotors; the bottom chain is stopped when rotation is < 300 rpm.

Paintwork

- > Green RAL 6029



Picture top: The optional self-steering axle in the heavy-duty version.



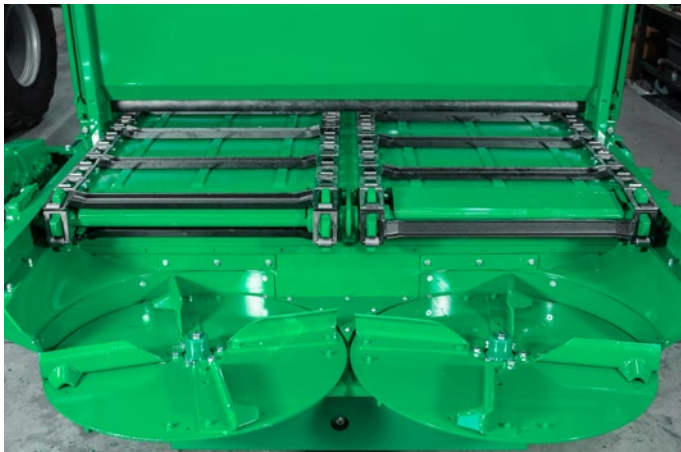
Picture left: The electronically controlled central lubrication system is an extra that automatically doses the required amount of lubrication to the various consumers, thereby minimizing wear.



TANDEM-AXLE SPREADER HS 200



The tandem-axle spreader HS 200 has a useful loading volume of approx. 17.5 m³ and is therefore ideally suited for large-scale tasks. Like all spreaders of the HS series, it has two endless floors with hardened round steel chains and two high-performance beaters as standard.



Picture top: As standard, the HS series has a 2-plate wide spreader unit with a plate diameter 1,000 mm/each with 4 throwers. The optional flat link chain for the endless floor is ideal for spreading material with a high specific weight. Due to its large contact surface, it is much less prone to wear.

Picture left: Control part of the electrical control for endless floor, rear gate and tailgate with a safety shutdown.

HS 200 / Technical Details

Total weight	22,000 kg
Working load approx.	13,000 kg
Support load	4,000 kg
Frame of bottom chain	7,300 mm x 2,000 mm
Box dimensions	6,000 mm x 1,910 mm
Height of side walls	1,400 mm
Useable load capacity approx.	17,5 cbm
Loading height over side walls	3,000 mm
Axles	10 bolts
Tires	700/50 - 26,5/16 PR

Chassis

- > Chassis with two strong frame members
- > Tandem-axle aggregate with BPW spring boggie
- > Hitch coupling with 2 rubber shock absorbers, swivel ring Ø 50 mm
- > 10-t jack stand with 2-step gearbox
- > Warning lights for road transport

Brake

- > 4-wheel oil-pressure brake or 4-wheel air-pressure brake
- > Parking brake
- > Automatic air-pressure brake

Body

- > Welded 3 mm thick steel body
- > Height of side walls 1,400 mm
- > Rubber sealing at front wall
- > Slurry gate with mechanical height indicator at front of spreader
- > Hydraulically-actuated rear hood

Scrapper Floor

- > Two conveyors with four round steel chains 14 x 50 mm (breaking load 4 x 24 t)
- > Steel bottom
- > Gearbox with hydr. motor for forward and reverse motion of scrapper floor

Spreading Aggregate

- > Two beater rotors with a diameter of 650 mm (opening area vertical 1,500 mm)
- > 1 ¼" roller chain to drive the beater rotor, right side
- > Two Ø 1,000 mm discs with four distribution vanes on each
- > Disc gearing with shaft Ø 60 mm/overload protection/freewheel drive mechanism, spreading unit protected by 8 mm thick HARDOX wear plates
- > WALTERSCHEID PTO PWE 580 with overload protection and wide angle joint

Operation

- > Electrical operation of the scrapper floor, slurry gate and rear hood, with automatic monitoring of beater rotors

Safety Devices

- > Overload clutch for protection of beater rotors
- > Overload clutch for protection of spreading system
- > Automatic stop of bottom chain. Monitoring of rotating beater rotors; the bottom chain is stopped when rotation is < 300 rpm.

Paintwork

- > Green RAL 6029



TANDEM-AXLE SPREADER

HS 220



With a useful loading volume of 20 m³, the tandem-axle spreader HS 220 leaves nothing to be desired as far as capacity is concerned. In combination with its incredible efficiency, it allows larger quantities of organic spreading material to be spread in a very short time - for continuous high daily rates.

HS 220/Technical Details

Total weight	22,000 kg
Working load approx.	12,500 kg
Support load	4,000 kg
Frame of bottom chain	7,300 mm x 2,300 mm
Box dimensions	6,000 mm x 2,210 mm
Height of side walls	1,400 mm
Useable load capacity approx.	20 cbm
Loading height over side walls	3,000 mm
Axles	10 bolts
Tires	700/50 - 26,5/16 PR

Chassis

- > Chassis with two strong frame members
- > Tandem-axle aggregate with BPW spring boggie, trailed BPW steering axle with hydraulic locking
- > Hitch coupling with 2 rubber shock absorbers, swivel ring Ø 50 mm
- > 10-t jack stand with 2-step gearbox
- > Warning lights for road transport

Brake

- > 4-wheel oil-pressure brake or 4-wheel air-pressure brake
- > Parking brake
- > Automatic air-pressure brake

Body

- > Welded 3 mm thick steel body
- > Height of side walls 1,400 mm
- > Rubber sealing on front wall
- > Slurry gate with mechanical height indicator at front of spreader
- > Hydraulically-actuated rear hood

Scraper Floor

- > Two conveyors with four round steel chains 14 x 50 mm (breaking load 4 x 24 t)
- > Steel bottom
- > Gearbox with hydr. motor for forward and reverse motion of scraper floor

Spreading Aggregate

- > Two beater rotors with a diameter of 650 mm (opening area vertical 1,500 mm)
- > Duplex roller chain to drive the beater rotor, right side
- > Two Ø 1,000 mm discs with four distribution vanes on each
- > Disc gearing with shaft Ø 60 mm/overload protection/freewheel drive mechanism, spreading unit protected by 8 mm thick HARDOX wear plates
- > WALTERSCHEID PTO PWE 580 with overload protection and wide angle joint

Operation

- > Electrical operation of the scraper floor, slurry gate and rear hood, with automatic monitoring of beater rotors

Safety Devices

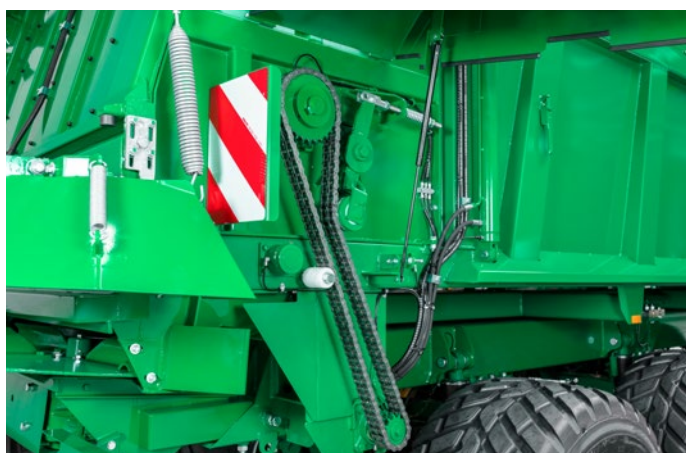
- > Overload clutch for protection of beater rotors
- > Overload clutch for protection of spreading system
- > Automatic stop of bottom chain. Monitoring of rotating beater rotors; the bottom chain is stopped when rotation is < 300 rpm.

Paintwork

- > Green RAL 6029



The heavy BPW bogie chassis with ALB controller is part of the standard scope of the HS 220.



The beaters are driven by means of a Duplex rolling chain. The solid chain tensioner can be checked and re-tightened when the safety guard is closed.



TANDEM-AXLE SPREADER

HS 240



The tandem spreader HS 240 offers users an impressive loading volume of 22 m³. When operated continuously, the machine can spread outstanding quantities of up to 500,000 m³ a year, making the HS 240 ideal for challenges of any size.



The hydraulic spring-loaded chassis in a heavy-duty version by BPW is standard in the HS 240, HS 320 and HS 420 models. And its handling properties are unrivalled. The driver always feels secure when driving the unit, even if the centre of gravity is very high when fully loaded.



As standard, the HS series has a 2-plate wide spreader unit with a plate diameter 1000 mm / each with 4 throwers.

HS 240 / Technical Details

Total weight	24,000 kg
Working load approx.	14,000 kg
Support load	4,000 kg
Frame of bottom chain	7,900 mm x 2,300 mm
Box dimensions	6,600 mm x 2,210 mm
Height of side walls	1,400 mm
Useable load capacity approx.	23 cbm
Loading height over side walls	3,000 mm
Axles	10 bolts
Tires	710/50 R 26.5

Chassis

- > Hydraulic suspension, with levelling valve
- > BPW axles, second axle as trailing axle, first axle as a lift axle
- > Hitch coupling with 2 rubber shock absorbers, swivel ring Ø 50 mm
- > 10-t jack stand with 2-step gearbox
- > Warning lights for road transport

Brake

- > 4-wheel oil-pressure brake or 4-wheel air-pressure brake
- > Parking brake
- > Automatic air-pressure brake

Body

- > Welded 3 mm thick steel body
- > Height of side walls 1,400 mm
- > Rubber sealing on front wall
- > Slurry gate with mechanical height indicator at front of spreader
- > Hydraulically-actuated rear hood

Scrapper Floor

- > Two conveyors with four round steel chains 14 x 50 mm (breaking load 4 x 24 t)
- > Steel bottom
- > Gearbox with hydr. motor for forward and reverse motion of scrapper floor

Spreading Aggregate

- > Two beater rotors with a diameter of 650 mm (opening area vertical 1,500 mm)
- > Duplex roller chain to drive the beater rotor right side
- > Two Ø 1,000 mm discs with four distribution vanes on each
- > Disc gearing with shaft Ø 60 mm / overload protection / freewheel drive mechanism, spreading unit protected by 8 mm thick HARDOX wear plates
- > WALTERSCHEID PTO PWE 580 with overload protection and wide angle joint

Operation

- > Electrical operation of the scrapper floor, slurry gate and rear hood, with automatic monitoring of beater rotors

Safety Devices

- > Overload clutch for protection of beater rotors
- > Overload clutch for protection of spreading system
- > Automatic stop of bottom chain. Monitoring of rotating beater rotors; the bottom chain is stopped when rotation is < 300 rpm.

Paintwork

- > Green RAL 6029



THREE-AXLE SPREADER

HS 320

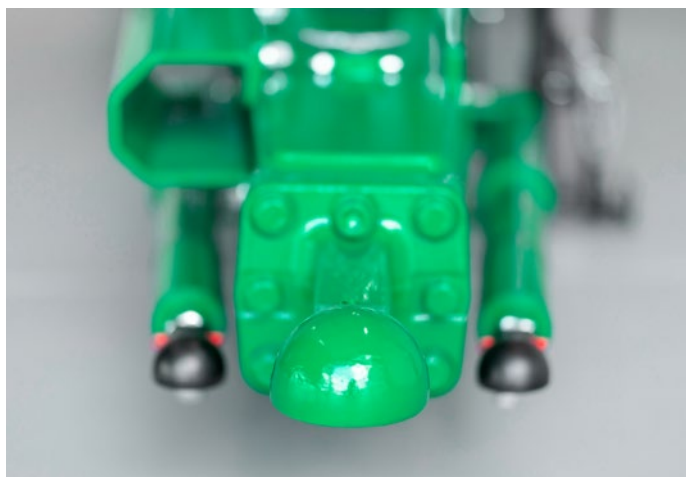


The Tridem spreader HS 320 can reach spreading outputs of up to 1,000 m³ a day. This means it is an ideal work unit, even on the largest fields in the world.



Picture left: The hydraulic support foot allows easy attachment and removal of the spreader.

Picture below: Spreader with spring-loaded lower couplings can also be equipped with a Ø 50 mm rotating ring hitch or the Ø 80 mm spherical-head system.



HS 320 / Technical Details

Total weight	34,000 kg
Working load approx.	22,000 kg
Support load	4,000 kg
Frame of bottom chain	8,800 mm x 2,300 mm
Box dimensions	7,500 mm x 2,210 mm
Height of side walls	1,400 mm
Usable load capacity approx.	25 cbm
Loading height over side walls	3,000 mm
Axles	10 bolts
Tires	710/50 R 26.5

Chassis

- > Chassis with two strong frame members
- > Three-axle chassis with BPW-axles, first and third axle with hydraulically forced steering, first axle with hydraulic lifting system
- > Hydraulic suspension, with levelling valve
- > Hydraulic suspension and height-adjustable hitch drawbar with K 80
- > 10-t jack stand with 2-step gearbox
- > Warning lights for road transport

Brake

- > 6-wheel oil-pressure brake or 6-wheel air-pressure brake
- > Parking brake
- > Automatic air-pressure brake

Body

- > Welded 3 mm thick steel body
- > Height of side walls 1,400 mm
- > Rubber sealing on front wall
- > Slurry gate with mechanical height indicator at front of spreader
- > Hydraulically actuated rear hood

Scraper Floor

- > Two conveyors with four round steel chains 14 x 50 mm (breaking load 4 x 24 t)
- > Steel bottom
- > Gearbox with hydr. motor for forward and reverse motion of scraper floor

Spreading Aggregate

- > Two beater rotors with a diameter of 650 mm (opening area vertical 1,500 mm)
- > Duplex roller chain to drive the beater rotors
- > Two Ø 1,000 mm discs with four distribution vanes on each
- > Disc gearing with shaft Ø 80 mm/overload protection/freewheel drive mechanism, spreading unit protected by 8 mm thick HARDOX wear plates
- > WALTERSCHEID PTO PWE 580 with overload protection and wide angle joint

Operation

- > Electrical operation of the scraper floor, slurry gate and rear hood, with automatic monitoring of beater rotors

Safety Devices

- > Overload clutch for protection of beater rotors
- > Overload clutch for protection of spreading system
- > Automatic stop of bottom chain. Monitoring of rotating beater rotors; the bottom chain is stopped when rotation is < 300 rpm.

Paintwork

- > Green RAL 6029



FOUR-AXLE SPREADER

HS 420



With a useful loading volume of 34 m³, the four-axle spreader HS 420 is by far the largest spreader in the TEBBE program. Extremely efficient, optimised chopping and an impressive throughput make it the spreader of choice on large international fields.



All machines of the HS series, even those that are exported, are used professionally by agricultural contractors and large agricultural companies.



The larger spreaders from TEBBE are used to spread up to 500,000 m³ of materials every year.

HS 420 / Technical Details

Total weight	44,000 kg
Working load approx.	26,000 kg
Support load	4,000 kg
Frame of bottom chain	11,000 mm x 2,300 mm
Box dimensions	9,700 mm x 2,210 mm
Height of side walls	1,400 mm
Usable load capacity approx.	34 cbm
Loading height over side walls	3,000 mm
Axles	10 bolts
Tires	710/50 R 26.5

Chassis

- > Chassis with two strong frame members
- > Four-axle chassis with BPW-axles, first and fourth axle with hydraulically forced steering, first axle with hydraulic lifting system
- > third axle with trailed steering system
- > Hydraulic suspension, with levelling valve
- > Hydraulic suspension and height-adjustable hitch drawbar with K 80
- > 10-t jack stand with 2-step gearbox
- > Warning lights for road transport

Brake

- > 8-wheel oil-pressure brake or 8-wheel air-pressure brake
- > Parking brake
- > Automatic air-pressure brake

Body

- > Welded 3 mm thick steel body
- > Height of side walls 1,400 mm
- > Rubber sealing on front wall
- > Slurry gate with mechanical height indicator at front of spreader
- > Hydraulically-actuated rear hood

Scraper Floor

- > Two conveyors with four round steel chains 14 x 50 mm (breaking load 4 x 24 t)
- > Steel bottom
- > Gearbox with hydr. motor forward and reverse motion of scraper floor

Spreading Aggregate

- > Two beater rotors with a diameter of 650 mm (opening area vertical 1,500 mm)
- > Duplex roller chain to drive the beater rotors right side
- > Two Ø 1,000 mm discs with four distribution vanes on each
- > Disc gearing with shaft Ø 80 mm / overload protection / freewheel drive mechanism, spreading unit protected by 8 mm thick HARDOX wear plates
- > WALTERSCHEID PTO PWE 580 with overload protection and wide angle joint

Operation

- > Electrical operation of the scraper floor, slurry gate and rear hood, with automatic monitoring of beater rotors

Safety Devices

- > Overload clutch for protection of beater rotors
- > Overload clutch for protection of spreading system
- > Automatic stop of bottom chain. Monitoring of rotating beater rotors; the bottom chain is stopped when rotation is < 300 rpm.

Paintwork

- > Green RAL 6029

SPECIAL EQUIPMENT SPREADER

Special equipment	HS 120	HS 180	HS 200	HS 220	HS 240	HS 320	HS 420
Chassis							
E20013	Drawbar with ball coupling system D80	•					
E20010	Hitch coupling with 2 rubber shock absorbers, swivel ring Ø 50 mm	•					
E20011	Hitch coupling with 2 rubber shock absorbers, coupling system D80	•					
E20015	Hydraulic jack		•	•	•	•	•
E20019	Drawbar with ball coupling system D80		•	•	•		
E20310	Trailed steering axle BPW		•				
E20040	Forced steering axle with hydraulic steering			•	•		
E20046	Forced steering axle with hydraulic steering			•			
	Chassis with hydraulic suspension						
	- BPW axles						
E20055	- first axle as lift axle			•	•		
	- 24,000 kg total weight						
	- chassis as interchange system with twist lock system						
	- in combination with E20072: without twist lock system						
E20064	Axles prepared for tire pressure regulation system						•
E20065	Axles prepared for tire pressure regulation system			•	•		
E20066	Axles prepared for tire pressure regulation system					•	
E20072	Electrical weighing system with 6 load cells			•	•	•	
E20078	Electrical weighing system with 8 load cells						•
E21014	Tires 650/50 R 22.5 Alliance 380		•				
E21004	Tires 650/50 R 22.5 Nokian Country King	•					
E21015	Tires 650/50 R 22.5 Nokian Country King		•				
E21003	Tires 650/50 R 22.5 Alliance 380	•					
E21017	Tires 650/55 R 26.5 Alliance 380		•				
E21005	Tires 650/55 R 26.5 Alliance 380	•					
E21021	Tires 650/55 R 26.5 Alliance 380			•	•		
E21006	Tires 710/50 R 26.5 Nokian Country King	•					
E21018	Tires 710/50 R 26.5 Nokian Country King		•				
E21022	Tires 710/50 R 26.5 Nokian Country King			•			
E21029	Tires 710/50 R 26.5 Nokian Country King				•	•	•
E21007	Tires 710/50 R 26.5 Michelin CargoXBib HF	•					
E21019	Tires 710/50 R 26.5 Michelin CargoXBib HF		•				
E21023	Tires 710/50 R 26.5 Michelin CargoXBib HF			•	•		
E21030	Tires 710/50 R 26.5 Michelin CargoXBib HF				•	•	•
E21008	Tires 750/45 R 26.5 Alliance 380	•					
E21020	Tires 750/45 R 26.5 Alliance 380		•				
E21024	Tires 750/45 R 26.5 Alliance 380			•	•		
E21031	Tires 750/45 R 26.5 Alliance 380				•	•	•
E21010	Tires 800/45 R 26.5 Michelin CargoXBib	•					
E21026	Tires 800/45 R 26.5 Michelin CargoXBib (width 3,050 mm)			•	•		
E21033	Tires 800/45 R 26.5 Michelin CargoXBib (width 3,050 mm)					•	
E21037	Tires 800/45 R 26.5 Michelin CargoXBib (width 3,050 mm)						•
E21042	Tires 800/45 R 26.5 Michelin CargoXBib (width 3,050 mm)						•
E21027	Tires 710/50 R 30.5 Michelin CargoXBib			•	•		
E21034	Tires 710/50 R 30.5 Michelin CargoXBib					•	
E21038	Tires 710/50 R 30.5 Michelin CargoXBib						•
E21043	Tires 710/50 R 30.5 Michelin CargoXBib						•
E21028	Tires 800/45 R 30.5 Michelin CargoXBib			•	•		
E21035	Tires 800/45 R 30.5 Michelin CargoXBib				•		
E21039	Tires 800/45 R 30.5 Michelin CargoXBib					•	
E21044	Tires 800/45 R 30.5 Michelin CargoXBib						•
E21001	Tires 700/50 - 22.5 BKT 648 16 PR	•					
E21013	Tires 700/50 - 22.5 BKT 648		•				
E21002	Tires 700/50 - 26.5 BKT 648	•					
E21016	Tires 700/50 - 26.5 BKT 648		•				
E54420	Hydraulically suspended drawbar				•		
E54510	Parking supports 4 x			•	•	•	•

Your fastest hotline to a perfect service

Our **spare parts service** – so that your machine always runs like on the first day.

The excellent spare part service at TEBBE is a real safety factor for our customers. We keep all 'regular' parts directly on stock for you. These are, of course, original spare parts of components that were used to construct the machine. Replacement of these parts means that your machine is as good as new and up and running again very quickly; the same also applies for machines of older series.

We can also supply all spare parts that do not come from our own production facility, for instance tyres, in a very short time. We only employ experts in our spare parts team who have in-depth know-how about the machines and who are able to localise and identify required parts precisely and accurately – bundled competence and reliability.

The **service hotline** – for nonstop access to absolute performance.

In the event of a problem, TEBBE will not keep you waiting! We have set up a fault hotline for our customers to provide immediate telephone support – even if you are out on the fields. Our contact partners are experts in the mechanics and electronics of all machines. The majority of the inquiries can be solved on the phone. Also, there is a standby service at the weekends, meaning that we are available to you every day.

